



ST ETHELBERT'S CATHOLIC PRIMARY SCHOOL AND NURSERY
HIGH EXPECTATIONS FOR ALL, IN THE LIGHT OF CHRIST

Headteacher: Mr S Marshall
St Ethelbert's Catholic Primary School and Nursery
Dane Park Road
Ramsgate, CT11 7LS

Telephone: 01843 585555
Email: admin@stethelbertsschool.co.uk
Website: stethelbertsschool.co.uk

5th December 2025

Latest Newsletter from Mr Marshall

Prayer for the Second Sunday of Advent

Heavenly Father, as we enter this Second Sunday of Advent, we light the candle of Peace and turn our hearts towards your calming presence. Through the voice of John the Baptist, you call us to prepare the way of the Lord— to straighten what is crooked, to smooth what is rough, and to open our lives to the transforming grace of your Son. Lord Jesus, Prince of Peace, teach us to welcome you with renewed faith, to walk in your light, and to become instruments of your peace in our homes, our communities, and our world.
Amen.



Dear St Ethelbert's Community,

What a busy, joyful, emotional and proud week it has been in school. Even with those elves!! (please see our school Facebook page for more evidence!). It is lovely to see the school looking so festive with the crib, trees and Christmas hoops.

It was lovely to see the wonderful learning that is taking place in between the Christmas Nativity/Service rehearsals. Thank you so much to our wonderful parents for helping out at the Christmas gift wrap event and disco/party this week, especially Father Christmas who made an appearance. You all looked like you had fun and it was great to see some new recruits. I am very grateful for you giving up your time for school; it really highlights the family feel we have in our school. Please continue to keep an eye on the





ST ETHELBERT'S CATHOLIC PRIMARY SCHOOL AND NURSERY
HIGH EXPECTATIONS FOR ALL, IN THE LIGHT OF CHRIST

newsletter, which contains plenty of information, especially over the next two weeks. Next Tuesday, we very much look forward to the Key Stage 2 pantomime with EYFS and Key Stage 1 the following week. Years 3, 4, 5 and 6 will be taking the annual visit to the Marlowe Theatre to see Snow White and the Seven Dwarfs. At the same time on the 16th, Nursery, Reception, Year 1 and 2 will be heading to the Granville Theatre to see Aladdin. It is really a highlight of the year.

Please note the Christmas Fair is next Friday after school. This will be a normal school uniform day.

No After School Clubs on the last day of term

There will be no clubs or Wraparound care on Friday 19th December

God Bless

Mr Marshall
Headteacher

Panto Time.... oh no it isn't.... oh yes it is!

I believe the children deserve the best enrichment experiences in life as we aim for our school motto 'High Expectations for all, in the Light of Christ'. Therefore, I am very glad to announce for a FIFTH year in a row, that all of Year 3, 4, 5 and 6 children will be jumping on a coach and heading to the Marlowe Theatre on Tuesday 9th December to see Snow White. Also, this year nursery, reception, year 1 and year 2 will walk to the Granville Theatre on Tuesday 16th November to see Aladdin. You should have received a letter this week. Thank you very much once again to our brilliant PTFA who have agreed to buy the tickets for the whole school. We will only ask parents to contribute towards the coach to the Marlowe in key stage 2. This will be on school money. Please note that junior children will need to be picked up later on Panto day and there will be no clubs. We will text with updates so you know roughly when we are due back (approx 5.15pm). You never know each year as we always get traffic coming out of Canterbury and at the Lord of the Manor roundabout. All children including Year 6 will need to be picked up. There will be wrap around care for the infants. The infant trip to the theatre on the 16th will be back by normal dismissal time.





ST ETHELBERT'S CATHOLIC PRIMARY SCHOOL AND NURSERY
HIGH EXPECTATIONS FOR ALL, IN THE LIGHT OF CHRIST



Year 5/6 Handball

On Friday, our year 5/6 pupils took part in a Handball event, this was a great opportunity for the children to showcase what they had been practicing in PE lessons.

As always the children showed great effort and teamwork, representing the school values brilliantly. This will be the last event before Christmas now for the children, but hopefully many more to come in the new year!



Christmas Fair- Friday 12th December (after school)

We're excited to invite you to our annual PTFA Christmas Fair on Friday, 12th December, straight after school. There will be stalls, games, treats, and plenty of festive fun for the whole family.

We need volunteers to help run stalls and support the event. Please email ptfa@stethelbertsschool.co.uk if you could help us.

Thank you for your continued support.





ST ETHELBERT'S CATHOLIC PRIMARY SCHOOL AND NURSERY
HIGH EXPECTATIONS FOR ALL, IN THE LIGHT OF CHRIST

PTFA Christmas Raffle

The raffle tickets were sent home in an envelope last week. The ticket is priced at £1 each, if you could purchase any tickets please complete the stubs and return them with money in sealed envelopes. There is a return box in the school office. Also, please kindly return unwanted tickets so we can sell them to others.

There will be a lot of lovely prizes that are donated to PTFA:

- P&O Ferry, return trip
- Family entry ticket to London Tower Bridge
- A pair of tickets to the pantomime at Granville Theatre

The draw will be at the PTFA Christmas Fair on Friday 12th December, from 3:30 PM, we hope to see you all at the fair!



Christmas card project

Thank you to everyone who purchased items from the Christmas Cards project.

Through this project, we have successfully raised a total of £171.16, which will be used for the children/school.





ST ETHELBERT'S CATHOLIC PRIMARY SCHOOL AND NURSERY
HIGH EXPECTATIONS FOR ALL, IN THE LIGHT OF CHRIST

Christmas Gift Wrap

Thank you to everyone who participated in the Christmas gift-wrapping event on Wednesday.

A total of 217 gifts were sold, and 6 PTFA volunteers (including 2 new volunteers!) were delighted to assist the children in selecting gifts from a wide range of options and wrapping them. It was truly heart-warming to see the excitement on the children's faces.



Christmas Infant's Party

Thank you to ALL 87 infant children who joined the Christmas Party, we had a full house! We hope the children had a fun and special experience meeting Santa.

Christmas Disco

Thank you to all 100 children who came to the Christmas Disco!

We had stalls for hot dogs, candy floss, doughnuts, drinks, sweets, Lucky Dip, Scratch cards, and crafts. We hope children enjoyed our stalls, which were run by PTFA volunteers.

We have raised a fantastic amount of £504.22!

All funds will be used to enhance the children's school years.

If you have any feedback, requests, or are interested in joining PTFA, please email us.

ptfa@stethelbertsschool.co.uk



Own clothes day for the Christmas fair:

Thank you very much for bringing in lovely donations for the Christmas fair this morning. PTFA is amazed at the amount we received!

If you could help at the fair, please email us at: ptfa@stethelbertsschool.co.uk

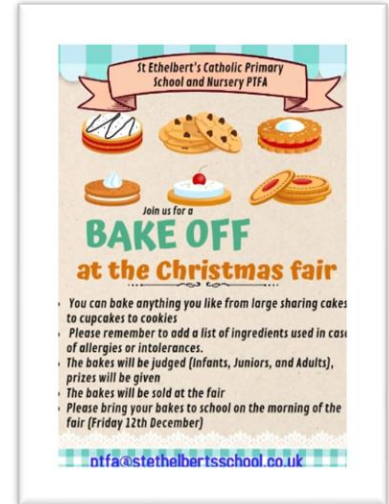




ST ETHELBERT'S CATHOLIC PRIMARY SCHOOL AND NURSERY
HIGH EXPECTATIONS FOR ALL, IN THE LIGHT OF CHRIST

Bake off at the Christmas fair:

At the fair, there will be St Ethelbert's Bake Off. Please bring your Bake to the school on the morning of Friday, 12th December. The Bakes will be judged and awarded a prize! Then the bakes will be sold at the fair. Please remember to add the list of ingredients used.



School Christmas Lunch

On Wednesday 17th December we will be having our Christmas lunch. Please see the menu attached. A Google form has been sent out to all parents to be completed if you wish your child to have a Christmas lunch.

After School Clubs and Wraparound provision

Please note that the last day for **all** after school clubs and wraparound provision will be **Thursday, 18th December**. Thank you.

Christmas Performance and Nativities

Please find below a list of our Nativity and Christmas Services below. Video recordings and photographs will be permitted so it can be shared with the wider family as long as it is for personal use and not to be shared on social media.

We have sent out a Google Form to all parents to sign up for your child's performance. Please be aware that the Year 1 and Year 2 performance at 2.15pm is **limited to two adults per child**. **Please sign up for either the morning or afternoon performance, but not both**. Thank you for your cooperation.

Who?	When?	Time?	Location?
Nursery performance for am and pm children	Monday 15 th December	11.00am	Infant Hall (Lilian Road entrance)





ST ETHELBERT'S CATHOLIC PRIMARY SCHOOL AND NURSERY
HIGH EXPECTATIONS FOR ALL, IN THE LIGHT OF CHRIST

Reception performances	Monday 15th December	2.15pm	Infant Hall (Lilian Road entrance)
Year 1 and 2 performances	Wednesday 17th December	9.15am or 2.15pm	Infant Hall (Lilian Road entrance) Parents can choose to watch either the 9.15am or the 2.15pm performance but not both
Years 3, 4, 5 and 6 service	Tuesday 16th December	2.00pm or 6.30pm	St Ethelbert's Church

- Please note we require **all** children in KS2 to return to the 6.30pm performance. Please drop children off at 6.00pm at school and then head to the church. Parents can choose to watch the 2.00pm or 6.30pm performance.

[SEND](#)

Please click [here](#) for the latest Kent County Council Newsletter for SEND. Here you will find the latest news on Children's mental health, KCC SEND progress to date and further general advice, guidance and support.

[Kent Family Hubs](#)

Please find attached a copy of the Kent Family Hub timetable from September to December 2025. The next Strengthening Families workshop to help reduce conflict between parents/carers is running on **16th October 10:00am – 12:00pm at Birchington Family Hub**. For those that wish to attend please use the booking form via this link [Strengthening Family Relationships \(SFR\) Workshop - Reducing Parental Conflict](#)





ST ETHELBERT'S CATHOLIC PRIMARY SCHOOL AND NURSERY
HIGH EXPECTATIONS FOR ALL, IN THE LIGHT OF CHRIST

Children showing our school values this week				
Year Group	Class Name/Saint Name	Child	Value	Reason for Value
Nursery	United Kingdom Saint George	Ivy	Thoughtfulness	Helping others in the Nursery class complete activities when they are finding them difficult
		Heaven	Knowledge	Practising handwriting patterns and knowing the phonic sounds!
Reception	Poland Saint Jadwiga	Edison	Inclusion	Having the confidence to deliver a speech to the whole school!
		Freya	Thoughtfulness	Being respectful to others during Nativity practise
Year 1	Romania Saint Andrew	Everleigh	Inclusion	Being a brilliant friend to everyone, inviting other to join in and making our class feel like a team
		Archie	Thoughtfulness	Showing wonderful care to others, using kind words, noticing when someone needs help. Your thoughtful choices make a big difference
Year 2	Hungary Elizabeth of Hungary	All of Year 2	Thoughtfulness	Being considerate and patient during our Nativity rehearsals





ST ETHELBERT'S CATHOLIC PRIMARY SCHOOL AND NURSERY
HIGH EXPECTATIONS FOR ALL, IN THE LIGHT OF CHRIST

Year 3	Japan Paulo Miki	Joy	Knowledge	Working on her addition of 3-digit numbers
		Archie	Thoughtfulness	Helping Ms Dowd as she struggled to open a door
Year 4	Italy Catherine of Siena	Scarlett	Thoughtfulness	Working well with others during group tasks
		Anshika	Thoughtfulness	Using good manners and always being polite
Year 5	India Saint Mother of Teresa	Adriana	Thoughtfulness	Always looking out for everyone
		Logan	Inclusion	Immersing himself in St Ethelbert's life
Year 6	France Saint Vincent de Paul & Saint Therese of Lisieux	Emerson	Thoughtfulness	Checking in on an upset friend to make sure they were ok
		Amy	Knowledge	Putting so much effort into her maths work this week!





ST ETHELBERT'S CATHOLIC PRIMARY SCHOOL AND NURSERY
HIGH EXPECTATIONS FOR ALL, IN THE LIGHT OF CHRIST



Well done!

Class Masses

If you would like to join us for a class Mass then you are very welcome. Children lead the Mass with readings and bidding prayers.

Date	Year Group attending Mass
11 December	Year 3
18 December	

Mass will be on Thursday mornings at 9.30am in St Ethelbert's church





ST ETHELBERT'S CATHOLIC PRIMARY SCHOOL AND NURSERY
HIGH EXPECTATIONS FOR ALL, IN THE LIGHT OF CHRIST



[Attendance this academic year...](#)

Class with No Lates: Year 5 and Year 6

Our attendance policy states that we aim for a 100% attendance

Reception	94.6%
Year 1	96%
Year 2	94.1%
Year 3	94.5%
Year 4	98.2%
Year 5	96.7%
Year 6	93.3%
Whole School this week	95.3%
Whole School academic year to date	95.7%
National Average academic year to date	95.3%

**PLEASE NOTE – IF YOU NEED TO CONTACT A MEMBER OF THE WRAPAROUND CARE STAFF AFTER 4PM
THE NUMBER TO CALL IS **07400 170519****

DIARY DATES

2025/26





ST ETHELBERT'S CATHOLIC PRIMARY SCHOOL AND NURSERY
HIGH EXPECTATIONS FOR ALL, IN THE LIGHT OF CHRIST

December 2025

9th Panto –Marlowe Canterbury Years 3-6

12th PTFA Christmas Fair (outside)

15th Nursery Christmas Concert 11:00am

15th Nativity Play (Reception) 2.15pm

16th Carol Concert (Juniors) 2.00pm & 6.30pm

16th Granville Theatre Panto for YN- Y2

17th Nativity Play (Y1 & Y2) 9.15am & 2:15pm

17th Christmas Dinner Day & Christmas Jumpers

19th Benediction - 1.15pm

19th END OF TERM 2

PLEASE NOTE: The last day for all after school clubs and wraparound provision will be **Thursday, 18th December**

